



C09-M-407

**3507**

**BOARD DIPLOMA EXAMINATION, (C-09)  
MARCH/APRIL—2016  
DME—FOURTH SEMESTER EXAMINATION  
PRODUCTION DRAWING**

*Time* : 3 hours ]

[ *Total Marks* : 60

**PART—A**

5×4=20

- Instructions** : (1) Answer **all** questions.  
(2) Each question carries **five** marks.

1. Write the toleranced dimensions of a shaft and hub assembly of size 150 mm to give a fit of H7-P6. What is the type of fit?
2. Draw the conventional symbols for the following :
  - (a) Square on shaft
  - (b) Straight Knurling
  - (c) Internal screw threads
  - (d) Bevel gear
  - (e) Semi elliptical leaf spring with eyes
3. Draw the symbols for following :
  - (a) Parallelism
  - (b) Symmetry
  - (c) Coaxiality
  - (d) Position
  - (e) Cylindricity

4. Write the surface roughness values for the following :

- (a) Planing
- (b) Reaming
- (c) Extrusion
- (d) Die-casting
- (e) Lapping

**PART—B**

40

- Instructions** : (1) Answer *any one* question.  
(2) Each question carries **forty** marks.  
(3) Choose suitable scale.

5. Study the assembly drawing (Page 3) of single tool post :

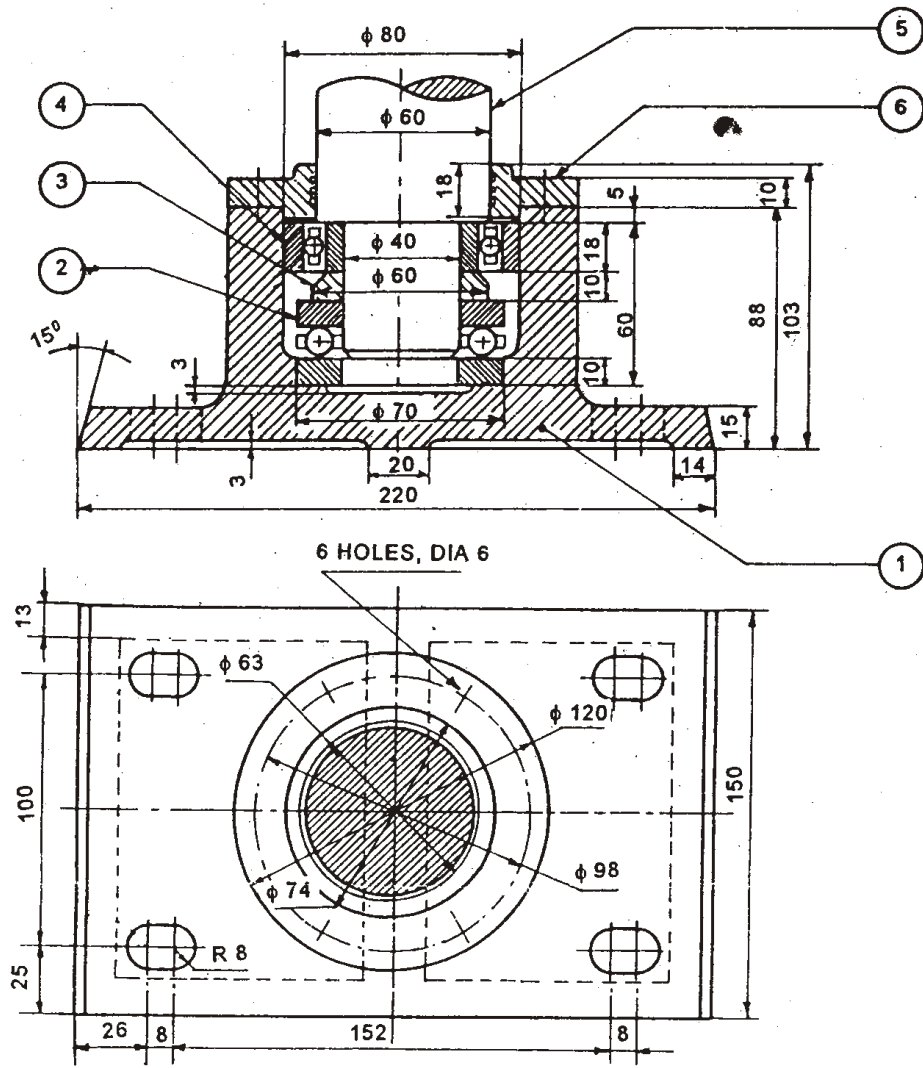
30+5+5=40

- (a) Draw the component drawings selecting suitable tolerances for parts 1, 3 and 6.
- (b) Prepare the process sheet for spacer.
- (c) Recommend surface roughness values on parts 1 and 3.

6. Study the given assembly drawing (Page 4) of stuffing box :

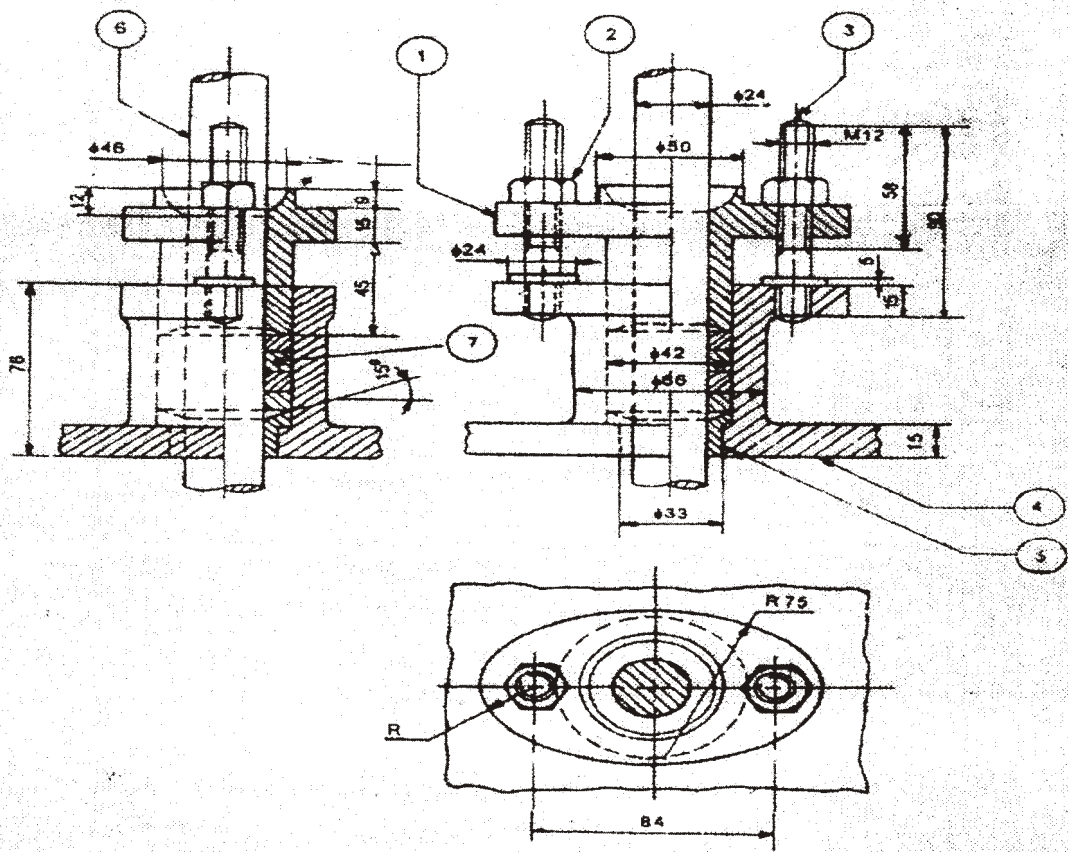
30+7+3=40

- (a) Draw the component drawings selecting suitable tolerance for parts 1, 2, 3, 5.
- (b) Prepare the process sheet for 'Gland'.
- (c) Write the material list for all parts.



**FOOT-STEP BEARING**

Part No.	Name	Qty.
1	Base	1
2	Thrust ball bearing	1
3	Spacer	1
4	Ball bearing	1
5	Shaft	1
6	Cover	1



Stuffing Box

Part No.	Name	Qty.
1	Gland	1
2	Nut	2
3	Stud	2
4	Body	1
5	Bush	1
6	Shaft	1

\*\*\*